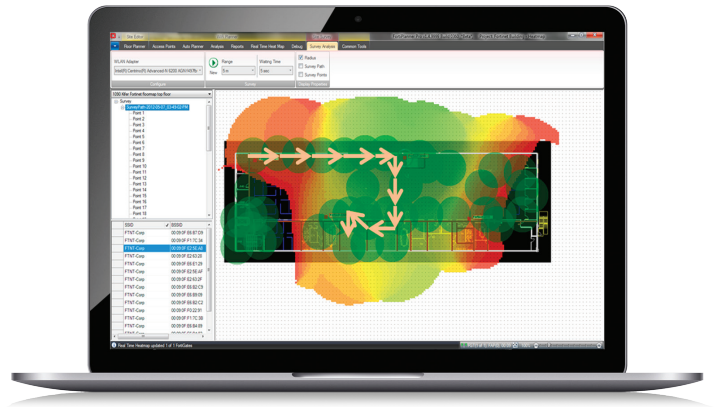


FortiPlanner™

Wireless LAN Planning and Real-Time Visualization Software

Simplify WLAN planning and deployment with our graphical Wireless LAN planning and post-deployment site survey tool. Using FortiPlanner ensures planning accuracy through sophisticated signal propagation ray-tracing algorithms. After deployment, a real-time coverage heat map shows you areas that need fine-tuning, such as coverage holes or especially congested areas.



Powerful Tools

Provides a simple and intuitive user interface to help plan your wireless LAN, ensuring a successful deployment with features such as ability to import floor plans, select the type of Access Point and automatically calculates the number and placement. The built-in reporting automatically creates a complete plan along with the number of FortiAPs required as well as the exact product SKUs for ordering.



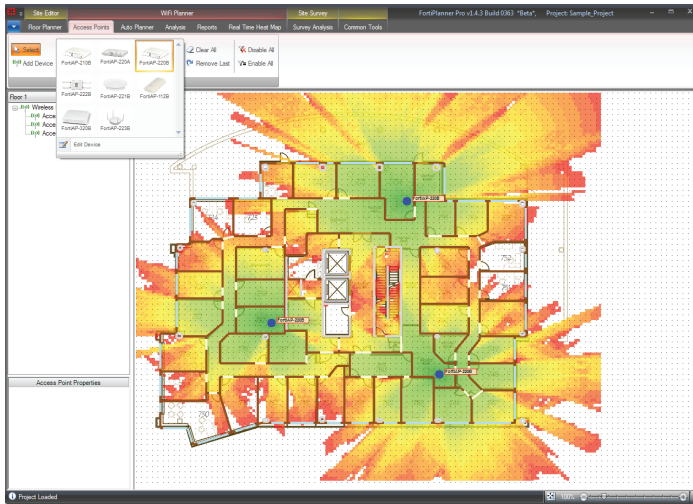
Post-deployment Site Survey

Uses the wireless LAN adapter in your Microsoft Windows laptop or tablet device to detect the signal level from your deployed FortiAPs, allowing you to confirm the wireless LAN coverage based on actual real-world analysis.

Highlights

- Free download for deployments of up to 10 FortiAPs
- Fortinet Developer Network subscribers gain access to the professional features at no extra cost, these include supporting unlimited FortiAPs with Site Survey and Real-Time Heat-map features which are enabled
- Plan your wireless network easily to ensure successful deployment
- Fine-tune FortiAP placement for optimal wireless network performance
- Quickly and easily find potential coverage holes
- Observe failed APs and FortiAP self-healing in real time
- Requires Microsoft Windows 7/8/10

Features



FortiPlanner wireless deployment planning

Wireless Deployment Planning

One of the biggest challenges that businesses face when deploying a wireless LAN is inadequate coverage, ultimately leading to poor business application performance. More often than not, this comes back to inadequate pre-deployment planning of the wireless network. Fortinet's FortiPlanner software provides a simple and intuitive user interface to help plan your wireless LAN, ensuring a successful deployment. The FortiPlanner software enables you to import a floor-plan of your environment, draw in the obstructions, select the type of Access Point and automatically calculates the number and placement of FortiAPs. The tool uses sophisticated signal propagation ray tracing algorithms to estimate signal loss and bounce based on objects that can cause radio frequency interference, such as walls, windows and elevator shafts. You can

Order Information

SKU	Description
N/A	FortiPlanner Wireless AP Deployment Planning Utility — FortiPlanner Lite Edition free download from Fortinet.com to support up to 10 Access Points. Requires Microsoft Windows 7/8/10.
FC-10-FNDN1-652-02-12	FNDN Deploy Toolkit — FNDN access for single user. Includes Deploy tools and licenses including FortiPlanner.
FC-10-FNDN2-139-02-12	FNDN Site Toolkit — includes up to 15 users with all features of Personal Toolkit, plus 6 FortiGate-VM-00 licenses.

System Requirements

FortiPlanner version 2.6.0 is compatible with Microsoft Windows 7/8/10 operating systems. FortiPlanner installs these software components automatically if they are not already present on your system: Microsoft .NET Framework 4.5 and SQL Server Compact 3.5 SP2.



www.fortinet.com

Copyright © 2019 Fortinet, Inc. All rights reserved. Fortinet®, FortiGate®, FortiCare® and FortiGuard®, and certain other marks are registered trademarks of Fortinet, Inc., and other Fortinet names herein may also be registered and/or common law trademarks of Fortinet. All other product or company names may be trademarks of their respective owners. Performance and other metrics contained herein were attained in internal lab tests under ideal conditions, and actual performance and other results may vary. Network variables, different network environments and other conditions may affect performance results. Nothing herein represents any binding commitment by Fortinet, and Fortinet disclaims all warranties, whether express or implied, except to the extent Fortinet enters a binding written contract, signed by Fortinet's General Counsel, with a purchaser that expressly warrants that the identified product will perform according to certain expressly-identified performance metrics and, in such event, only the specific performance metrics expressly identified in such binding written contract shall be binding on Fortinet. For absolute clarity, any such warranty will be limited to performance in the same ideal conditions as in Fortinet's internal lab tests. Fortinet disclaims in full all covenants, representations, and guarantees pursuant hereto, whether express or implied. Fortinet reserves the right to change, modify, transfer, or otherwise revise this publication without notice, and the most current version of the publication shall be applicable. Fortinet disclaims in full all covenants, representations, and guarantees pursuant hereto, whether express or implied. Fortinet reserves the right to change, modify, transfer, or otherwise revise this publication without notice, and the most current version of the publication shall be applicable.

select various built-in deployment scenarios such as VoIP, high priority data or normal, to ensure adequate wireless LAN coverage. The built-in reporting tool enables sales engineers to prepare a complete plan along with the number of FortiAPs required as well as the exact product SKUs for ordering.

Post Deployment Site Survey

No environment is perfect and even the best wireless network pre-deployment plans require post-deployment adjustments. The FortiPlanner Site Survey feature uses the wireless LAN adapter in your Microsoft Windows laptop or tablet device to detect the signal level from your deployed FortiAPs, allowing you to confirm the wireless LAN coverage based on actual real-world analysis. The engineer can walk around the environment to take readings, and the tool combines these measurements to report coverage holes that may need to be fixed. Resolving post-deployment issues with a site survey will reduce the headaches and time-consuming troubleshooting once your business users begin logging on to the new wireless LAN.

Real-Time Coverage Heat-Map and Performance Visualization

Mobile devices by nature move around the organization throughout the day. As a result, deep visibility into the wireless network is essential to uncover coverage holes and areas of congestion. FortiPlanner connects directly to any number of FortiGate devices to provide real-time visualization of wireless coverage, connected clients and failed APs, simplifying troubleshooting and reducing helpdesk tickets.